



Manchester University

NHS Foundation Trust



Sel Environmental Ltd

Real Innovation

SEL Environmental Ltd
Canal House
Bonsall Street
Blackburn
BB2 4DD

Tel:01254 589987
www.selel.co.uk

PROJECT	NORTH MANCHESTER GENERAL HOSPITAL
PROJECT NUMBER	20200 MSCP
DOCUMENT NUMBER	20200-SEL-XX-XX-SP-X-0001
TITLE	CONTROFLOW SUDS02008 PREFABRICATED FLOW CONTROL CHAMBER FOR SUB-BASE ATTENUATION
REVISION	P01
STATUS	S2
	FOR INFORMATION

Controflow 500 Series 110 Ø Stubs Stepped Invert Roddable

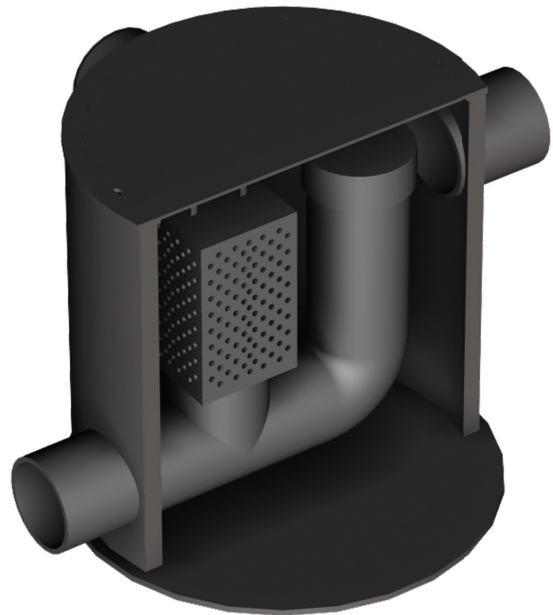
SUDS02008

Applications – permeable paving.

A standard flow control chamber with a single, guarded orifice (to specified diameter), designed to manage outflows from permeable paving or other open graded sub-base construction. Stepped inverts simplify the construction of transitions from shallow permeable paving to deeper constructions.

The protective guard and orifice cap are removable, and the rodding access upstand can act as an overflow with its cap removed. Three 110mm diameter inlet pipe connection stubs offer layout flexibility. Supplied with a temporary protective site cover (permanent cover and frame not included).

Bespoke flow control chambers can be manufactured to suit specific requirements.



Please specify:
• orifice diameter

